

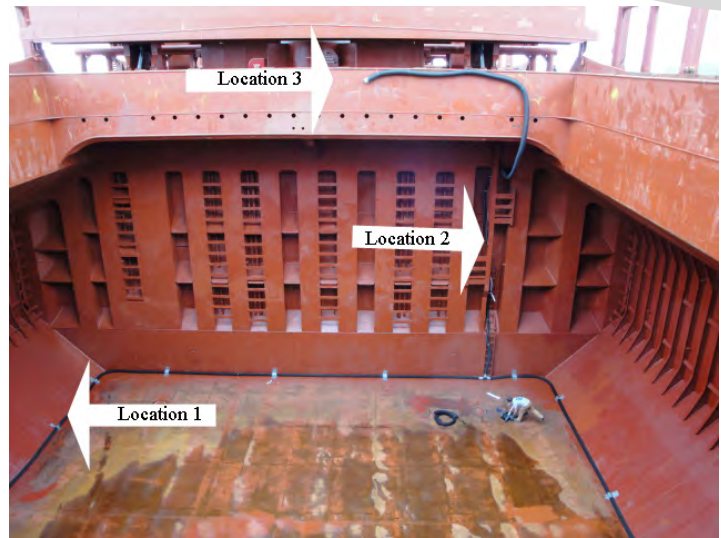


J-SYSTEM®



Recirculation Method Installation Instructions

- Complete J-System®
Recirculation Method
Installed
- Only J-System®
Recirculation Method
Tubing Installed



Prior to loading cargo, it is required that Degesch America, Inc. install plastic tubing in the empty holds of this vessel. This is being done to insure the fumigation will meet US Federal Grain Inspection Service Fumigation Handbook rules and regulations related to the fumigation of in-transit vessels.

Our crew will be installing plastic tubing:

1. Around the perimeter of the empty hold. (See Location 1 in above picture)
2. Attached to one hold access ladder. (See Location 2 in above picture)
3. Along a section of the hatch coaming. (See Location 3 in above picture)

**This tubing should have no impact on the operation of the vessel!
DO NOT REMOVE. REARRANGE OR TAMPER WITH THIS TUBING!**

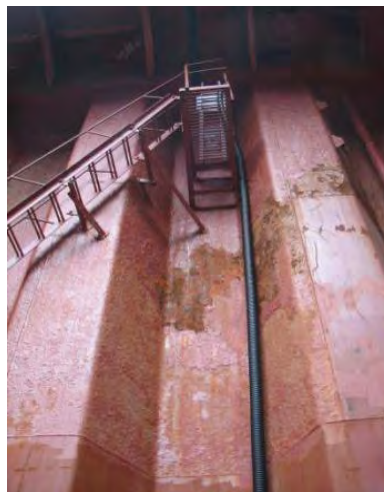
www.jsystemllc.com

www.degeschamerica.com

Only J-System® Recirculation Method Tubing Installed



Plastic tubing is taped to the perimeter of the cargo hold.



A connection is made between the manway opening and the bottom and top of the cargo hold.

Complete J-System® Recirculation Method Installed



A blower is attached to the J-System® tubing inside the manway opening allowing high fumigant concentrations from the surface of the cargo to be forced to the bottom of the cargo hold.